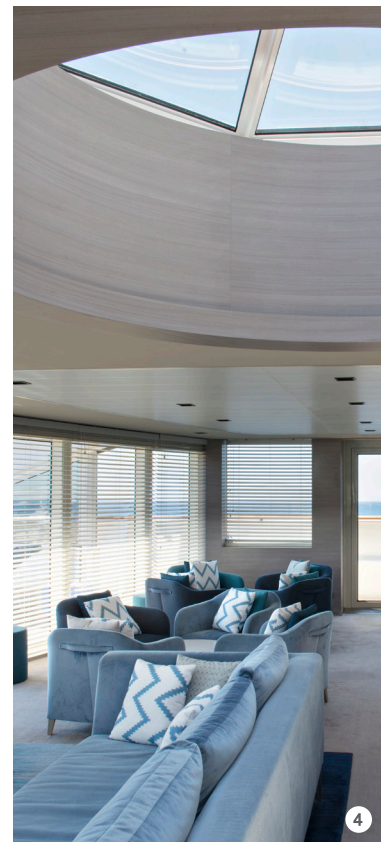




The Sisterships

Ships on a human scale.
With just 122 or 132 staterooms
and suites *Le Boréal*, *L'Austral*,
Le Soléal and *Le Lyrial* are compact
enough to gain access to isolated places
and ports reserved for small vessels.

They are thus faithful
to the PONANT DNA:
exploring the world
with constantly
renewed curiosity.





1. Spa, *Le Lyrial*
2. The gastronomic Restaurant, deck 2, *Le Lyrial*
3. The swimming pool on deck 6
4. The Observatory lounge, *Le Boréal*
5. The library

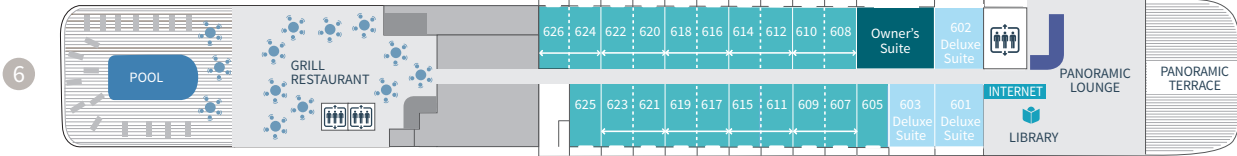
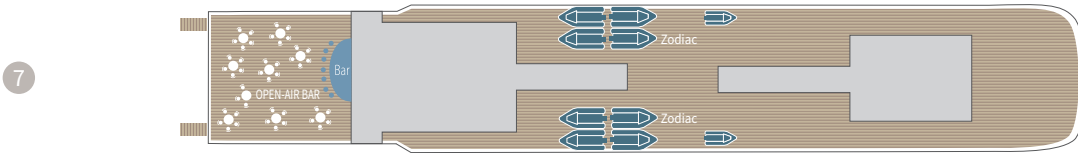
6. *Le Boréal*
7. Prestige Stateroom, *Le Lyrial*
8. Prestige Stateroom Balcony, *Le Boréal*
9. Prestige Stateroom, *L'Austral*

Amenities

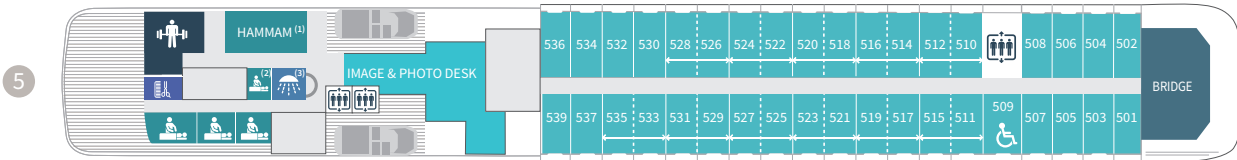
- Exclusive, tailor made services for guests in the Owner Suites, thanks to the assistance of our Concierge service
- Individually controlled airconditioning
- Stateroom layout: king-size bed, or twin beds, communicating Staterooms available (children welcome)
- Minibar
- Flat-screen satellite TV
- Video on demand
- Bose Bluetooth speaker

- Safe
- Diptyque bath products
- Dressing table, bath robes, hairdryer
- Direct line telephone
- 110V American (two flat pins)/220V European (round sockets with two round pins)
- 24hr room service
- Inclusive Wifi internet access*

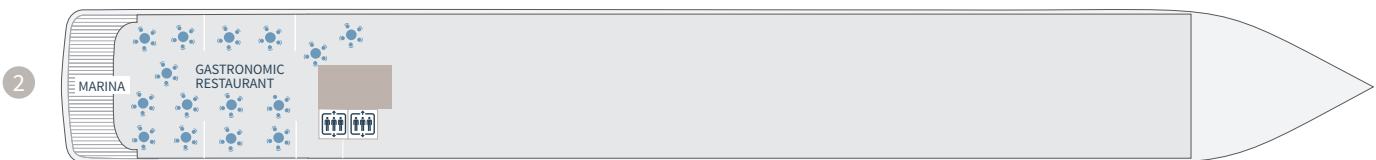
**Depending on the navigation areas, the Wifi may not be accessible for reasons beyond our control.*



Le Lyrial



Configuration: L'Austral: ⁽¹⁾ Locker ⁽²⁾ Hamman ⁽³⁾ Locker • Le Boréal: ⁽¹⁾ Massage ⁽²⁾ Hamman ⁽³⁾ Locker • Le Soléal: ⁽¹⁾ Hammam ⁽²⁾ Locker ⁽³⁾ Locker.



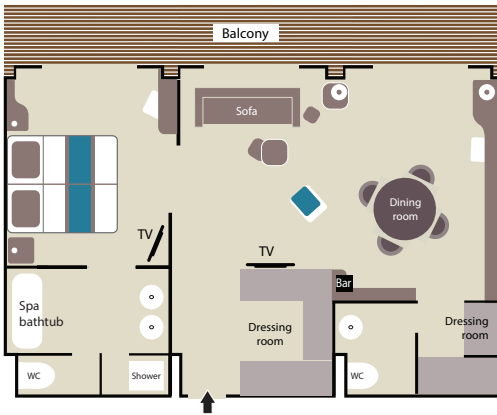
Scan the QR code to see more of our Sisterships

- Owner's Suite Deck 6
- ↔ Grand Privilege Suite Deck 6 (Le Lyrial)
- Prestige Suites Deck 5 - 6 (except Le Lyrial)
- Grand Deluxe Suite Deck 6 (Le Lyrial)
- Prestige Staterooms Deck 4 - 5 - 6
- Privilege Suites Deck 6 (Le Lyrial)
- Deluxe Suites Deck 6
- Grand Deluxe Suite Deck 6 (Le Lyrial)
- Deluxe Staterooms Deck 3
- Superior Staterooms Deck 3

Discover your Stateroom

OWNER'S SUITE aboard *Le Lyrial*

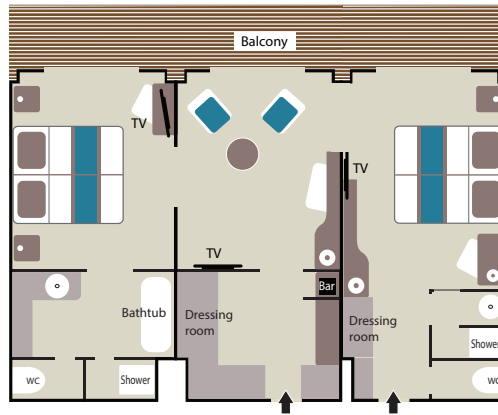
(55 sq.m/581 sq.ft + 12 sq.m/129 sq.ft private balcony with sliding bay windows)



Suite de l'Armateur - LYRIAL

GRAND PRIVILEGE SUITE aboard *Le Lyrial*

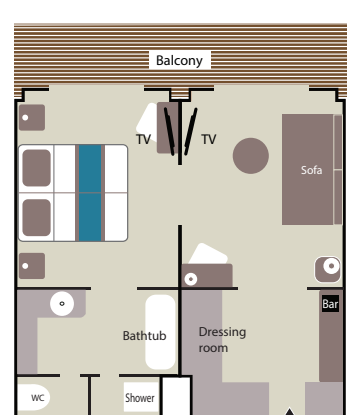
(55 sq.m/581 sq.ft + 12 sq.m/129 sq.ft private balcony with sliding bay windows)



Suite Grand Privilège - LYRIAL

PRIVILEGE SUITE aboard *Le Lyrial*

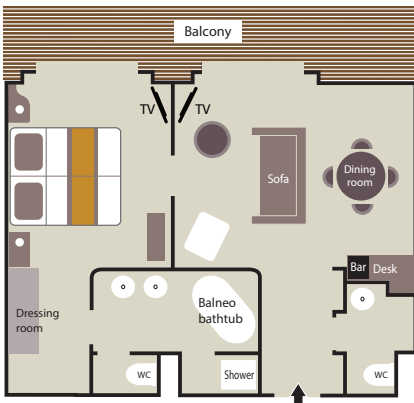
(37 sq.m/388 sq.ft + 8 sq.m/86 sq.ft private balcony with sliding bay windows)



Suite Privilège - LYRIAL

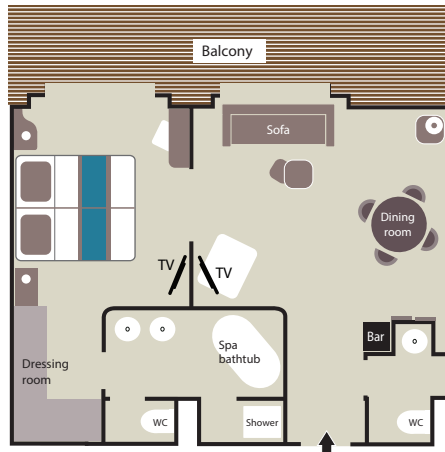
OWNER'S SUITE

(45 sq.m/484 sq.ft + 9 sq.m/97 sq.ft private balcony with sliding bay windows)



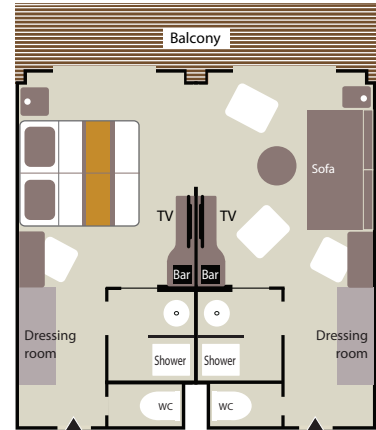
GRAND DELUXE SUITE aboard *Le Lyrial*

(45 sq.m/484 sq.ft + 10 sq.m/108 sq.ft private balcony with sliding bay windows)



PRESTIGE SUITE

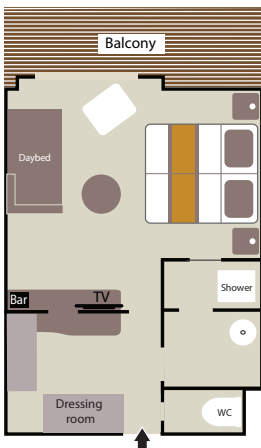
(37 sq.m/398 sq.ft + 8 sq.m/86 sq.ft private balcony with sliding bay windows)



Prestige Suites aboard *Le Boréal* & *Le Soléal*: 1 shower and 1 bathtub.

DELUXE SUITE

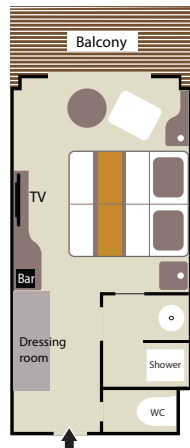
(27 sq.m/290 sq.ft + 6 sq.m/64 sq.ft private balcony with sliding bay window)



Deluxe Suites aboard *Le Boréal*: 1 shower and 1 bathtub

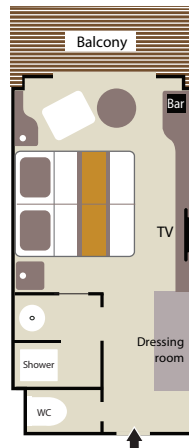
PRESTIGE STATEROOM

(18.5 sq.m/200 sq.ft + 4 sq.m/43 sq.ft private balcony with sliding bay window)



Deck 4

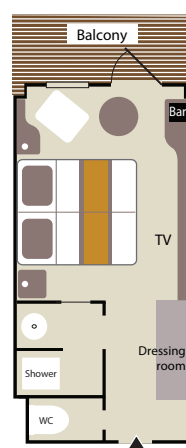
Deck 5-6



Prestige Staterooms aboard *Le Boréal* & *Le Soléal*, decks 5 & 6: 1 shower or bathtub depends on cabins

DELUXE STATEROOM

(18 sq.m/200 sq.ft + 4 sq.m/43 sq.ft private balcony with French window)



SUPERIOR STATEROOM

(21 sq.m/226 sq.ft)

